

SBI Clerk Previous Year Question Paper 2019 - Reasoning Ability

Directions Q.1 - Q.5: Study the following information and answer the question below:

Eight persons are sitting around a circular table facing towards the centre, although not in the same order as such. Two individuals sit between R and Q (either from left or right). S sits immediately to the right of R. One person sits between S and R, who faces towards U. R and U are not immediate neighbours of each other. X sits 2nd to the left of W. Three persons sit between V and W.

Q.1 Four of the following five are alike in a certain way and hence they form a group. Which one of the following does not belong to that group?

1. R - X
2. Q - V
3. T - X
4. W - U
5. R - Q

Answer: (1)

Q.2 Who among the following sits immediate right of V?

1. X
2. S
3. U
4. T
5. W

Answer: (3)

Q.3 The number of persons sit between R and U, when counted to right of R is the same as the person who sits between X and _____, when counted to the left of _____?

1. Q
2. T
3. U

4. V
5. None of these

Answer: (2)

Q.4 Who among the following faces S?

1. V
2. W
3. Q
4. X
5. R

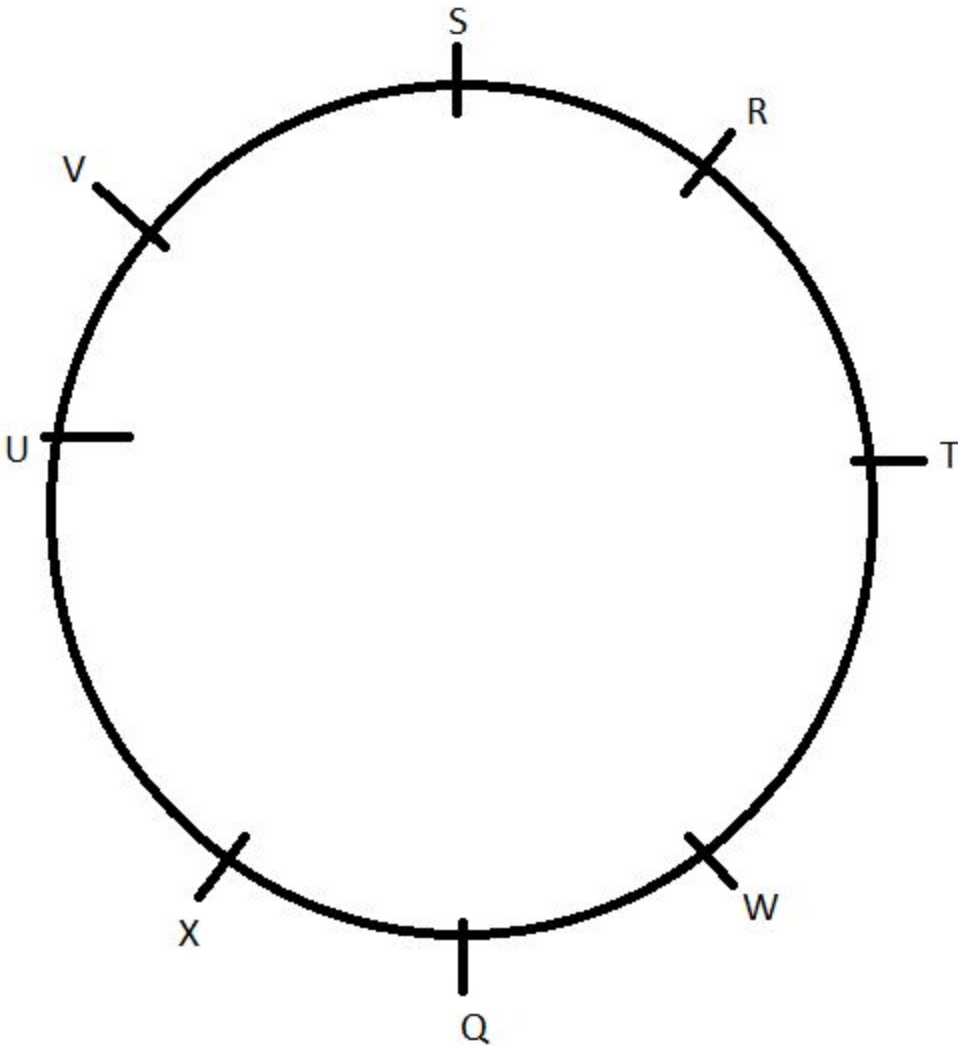
Answer: (3)

Q.5 Who among the following sits 3rd to the right of T?

1. Q
2. V
3. R
4. U
5. None of these

Answer: (2)

Solution Q.1 - Q.5



Solution 1: (1) R - X

Solution 2: (3) U

Solution 3: (2) T

Solution 4: (3) Q

Solution 5: (2) V

Direction Q.6 - Q.10: Study the following information and answer the question below:

Two individuals are sitting in two parallel rows containing five persons in each row such that there is an equal distance between adjacent persons. In the first row, B, C, D, E and F are seated and all of them are facing towards the north. In the second row, Q, R, S, T and U are seated, with all of them facing towards the south. Thereby, in the given seating arrangement, each member seated in a row faces another member of the other row. F sits 2nd from one of the extreme ends of the row. Q faces the one who sits 2nd to the right of F. E sits 2nd to the left of C, who is not sitting at the extreme end. Two persons sit between T and R. S sits immediately to the left of T. D sits next to C.

Q.6 Who among the following faces R?

1. C
2. E
3. B
4. D
5. None of these

Answer: (3)

Q.7 Who among the following sits at the extreme end of the row

1. F
2. U
3. D
4. S
5. Q

Answer: (2)

Q.8 Four of the following five are alike in a certain way and hence they form a group. Who among the following do not belong to that group?

1. R
2. B
3. U
4. E
5. Q

Answer: (5)

Q.9 Who among the following sits 2nd to the right of Q?

1. T
2. S
3. R
4. U
5. None of these

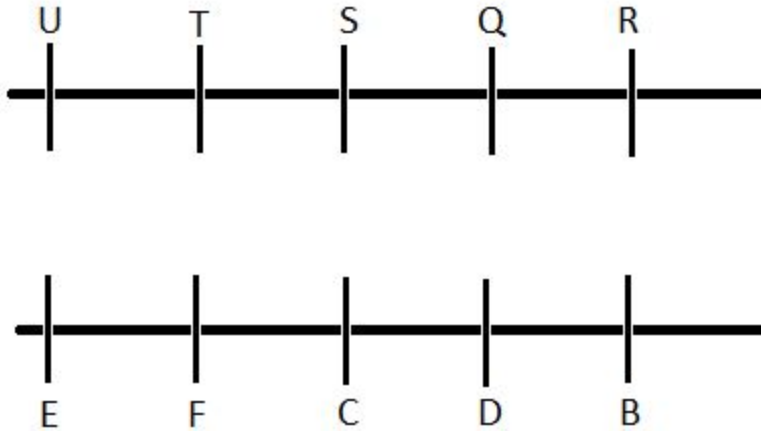
Answer: (1)

Q.10 What is the position of B with respect to F?

1. 3rd to the left
2. Immediate to the left
3. 2nd to the left
4. 3rd to the right
5. 2nd to the right

Answer: (4)

Solutions Q.6 - Q.10



Solutions 6: (3) B

Solutions 7: (2) U

Solutions 8: (5) Q

Solutions 9: (1) T

Solutions 10: (4) 3rd to the right

Directions Q.11 - Q.15: Study the following information and answer the question below:

Seven people are buying different things. Only one buys between D and B. C is buying immediately before D. Two people buy things between D and E. D buy things after E. F buys things immediately before E. More than three people buy things between F and G. Only three persons buy things between E and H.

Q.11 How many people buy things between B and G?

1. One
2. Two

3. Three
4. Four
5. More than four

Answer: (3)

Q.12 Who among the following buys immediately after G?

1. E
2. C
3. H
4. B
5. No one

Answer: (5)

Q.13 How many persons buy things before B?

1. One
2. Two
3. Three
4. Four
5. More than four

Answer: (2)

Q.14 As many as persons are buying things before E as after ____?

1. F
2. C
3. G
4. B
5. H

Answer: (5)

Q.15 Who among the following buys immediately after G?

1. E
2. C
3. H

- 4. B
- 5. No one

Answer: (5)

Solutions Q.11 - Q.15

Persons
F
E
B
C
D
H
G

Solutions 11: (3) Three

Solutions 12: (5) No one

Solutions 13: (2) Two

Solutions 14: (5) G

Solutions 15: (5) No one

Direction Q.16 - Q.18: Study the following information and answer the question below:

Point T is 15m west of point S. Point S is 30m south of point R. Point Q is 20m west of point R. Point V is 15m south of Q. Point U is 35 north of point T.

Q.16 If point W is exactly between R and S, then how far and in which direction is point V with respect to W?

1. 15m, North-East
2. 15m, East
3. 10m, North-West
4. 20m, West
5. 20m, North - East

Answer: (4)

Q.17 Four of the following are alike in a certain way, so form a group. Which of the following does not belong to that group?

1. Q, U
2. V, R
3. S, Q
4. T, R
5. V, U

Answer: (3)

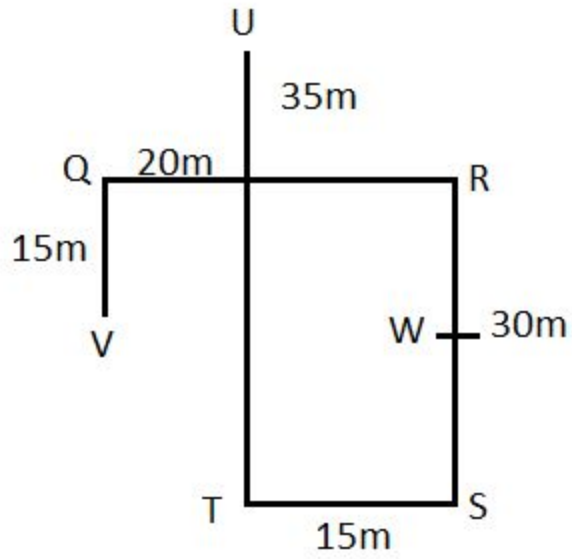
Q.18 If point X is in 5m east of point U, then what is the distance between point X and point T?

1. 5 m
2. 15 m
3. 25 m
4. 10 m
5. 20 m

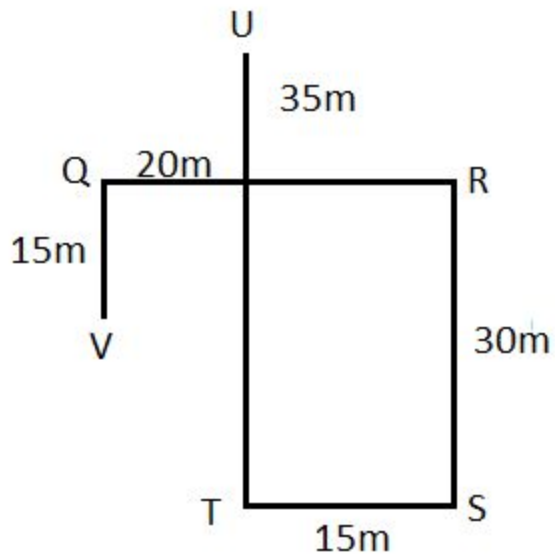
Answer: (2)

Solution Q.16 - Q.18

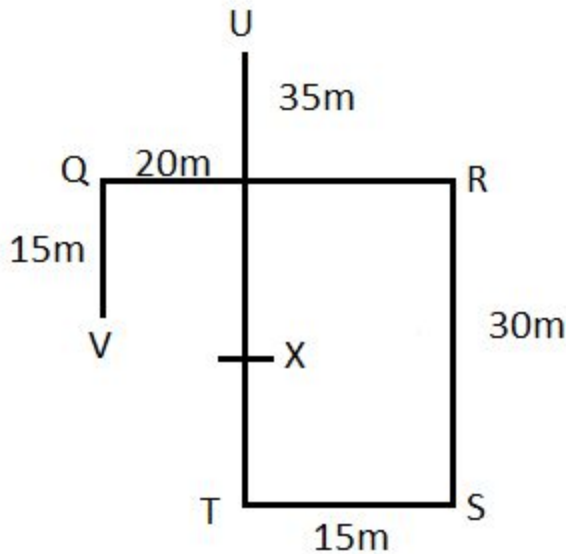
Solution 16: (4)



Solution 17: (3)



Solution 18: (2)



Directions Q.19 - Q.23: Study the following sequence and answer the given questions.

B # 3 4 ^ F N M \$ 9 7 & M E S # 9 8 6 Q X Z 1 7 % R O G @ 2 I B 2 U &

Q.19 Which of the following element is sixth to the left of the fourteenth from the left end of the arrangement?

1. 6
2. ^
3. \$
4. M
5. None of these

Answer: (4)

Q.20 If all the symbols are dropped from the series, which element will be twelfth from the right end?

1. 9
2. Q
3. R

4. X
5. M
6. None of these

Answer: (4)

Q.21 How many such numbers are there in the given series which are immediately preceded by a symbol and followed by a letter.

1. None
2. One
3. Two
4. Three
5. Four

Answer: (2)

Q.22 How many such letters are there in the given series which are immediately preceded by a number and immediately followed by a symbol?

1. One
2. Two
3. Three
4. More than three
5. None of these

Answer: (1)

Q.23 Find the odd one out?

1. N64
2. D86
3. Y%8
4. R27
5. 8EL

Answer: (5)

Solution 19: (4) M

Solution 20: (4) Z

Solution 21: (2) One - @21

Solution 22: (1) One - 2U&

Solution 23: (5) 8EL

Direction Q.24 - Q.26: Study the following information carefully and answer the questions below:

A certain number of persons are sitting in the row. All of them are facing towards north. R sits sixth from the right of T. U sits forth to left of R. Only two persons sit between R and Q. S sits forth to the left of T. V sits between T and U. W sits second to the right of V. X is third from any of the end. T is eight from the left end of the row. Six persons between X and W.

Q.24 How many individuals can sit in the row?

1. 14
2. 18
3. 23
4. 15
5. 20

Answer: (5)

Q.25 What is the position of 'X' with respect to R?

1. Fourth to the right
2. Fifth to the right
3. Fourth to the left
4. Eight to the right
5. Six to the left

Answer: (1)

Q.26 If Y sits immediate right of W then how many persons sit between Y and Q?

1. Five
2. Six
3. Four

4. Three
5. None of these

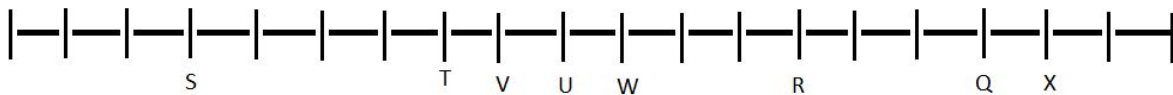
Answer: (3)

Q.27 If it is possible to make only one meaningful word with the 2nd, 4th, 6th and 7th letters of the word 'UNILATERAL' which would be the second letter of the word from the right end? If more than one such word can be formed 'Y' as the answer. If no such word can be formed, give 'Z' as your answer.

1. Y
2. N
3. L
4. T
5. Z

Answer: (2)

Solution Q.24 - Q.26



Solution 24: (5)

Solution 25: (1)

Solution 26: (3)

Solution 27: (2)

One word formed - lent

Directions Q.28 - Q.30: In each of the question, relationships between some elements are shown in the statements. These statements are followed by conclusions numbered I and II. Read the statements and give the answer.

- I. If only conclusion I follows.
- II. If only conclusion II follows
- III. If either conclusion I or II follows.
- IV. If neither conclusion I nor II follows.
- V. If both conclusions I and II follow.

Q.28

Statements: $B \geq C \geq D = E > F \leq G < H$

Conclusions: I. $F < C$
II. $H > F$

Answer: (5)

Q.29

Statements: $Q \leq S < U = V$; $R \geq U \leq T \geq W$

Conclusions: I. $R > Q$
II. $W < S$

Answer: (1)

Q.30

Statements: $M > N = P \geq Q$; $M \leq N \geq T \geq U$

Conclusions: I. $U \leq Q$
II. $O < M$

Answer: ()

Solutions Q.28 - Q.30

Solution 28: (5)

- I. $F < C$ (True)
- II. $H > F$ (True)

Solution 29: (1)

- I. $R > Q$ (True)
- II. $W < S$ (False)

Solution 30: (2)

- I. $U \leq Q$ (False)
- II. $O < M$ (True)

Q.31 In the word 'PRODUCE', how many pairs of the letters have the same number of letters between them in the given word as they have in the English alphabet series?

- 1. Four
- 2. Two
- 3. One
- 4. Three
- 5. More than four

Answer: (3)

Solution 31:

PRODUCE

Direction Q.32 - Q.35: In each of the questions below are given some statements followed by some conclusions. You have to take the given statements to be true even if they seem to be at variance with facts that are commonly known. Read all the conclusions and then decide which of the given conclusions logically follows from the given statements disregarding commonly known facts.

Q.32 Statement: No party is gathering. All Summary are Gathering. Only a few Gathering are Committee.

Conclusions: I. Some Committee can be Summary
II. Some Party can be Committee.

- (a) If either conclusion I or II follows.
- (b) If only conclusion I follows
- (c) If neither conclusion I nor II follows.
- (d) If only conclusion II follows.
- (e) If both conclusions I and II follow.

Answer: (2)

Q.33 Statements: All Chocolates are Toffee. No Toffee is Muffin. Only a few Muffin are Dark.

Conclusions: I. No Chocolate is Muffin

II. Some Toffee can never be Dark

- (a) If only conclusion II follows.
- (b) If only conclusion I follows
- (c) If neither conclusion I nor II follows.
- (d) If either conclusion I or II follows.
- (e) If both conclusions I and II follow.

Answer: (5)

Q.34 Statements: No Market is Home. Only a few Home are Room. Only a few Room is Vance.

Conclusions: I. Some Home are Vance
II. Some Market can never be Room

- (a) If only conclusion I follows.
- (b) If neither conclusion I nor II follows
- (c) If either conclusion I or II follows.
- (d) If only conclusion II follows.
- (e) If both conclusions I and II follow.

Answer: (2)

Q.35 Statements: Some Ball are Garden. All Garden are Trade. Only a few Trade are Pump

Conclusions: I. Some Ball are Pump
II. Some Garden can be Pump

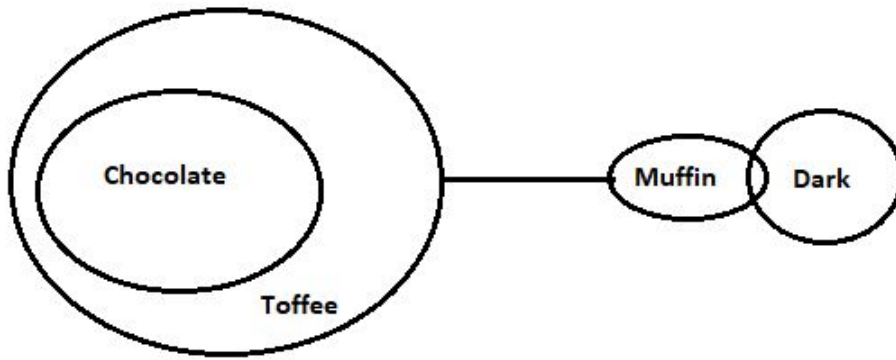
- (a) If only conclusion II follows.
- (b) If neither conclusion I nor II follows
- (c) If either conclusion I or II follows.
- (d) If only conclusion I follows

(e) If both conclusions I and II follow.

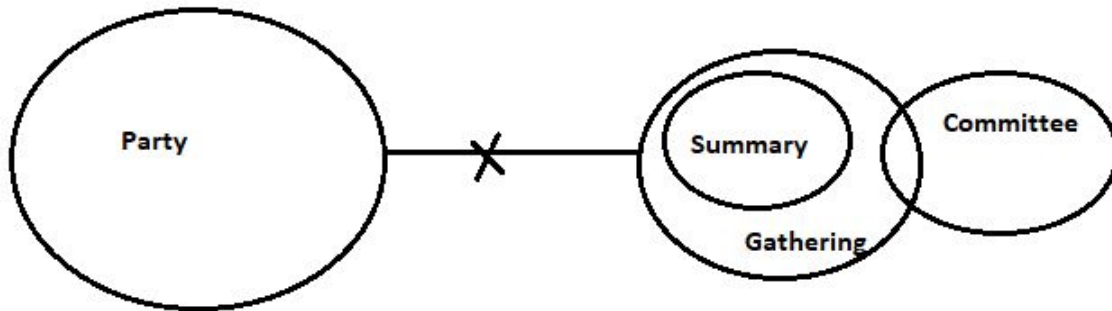
Answer: (2)

Solutions Q.32 - Q.35

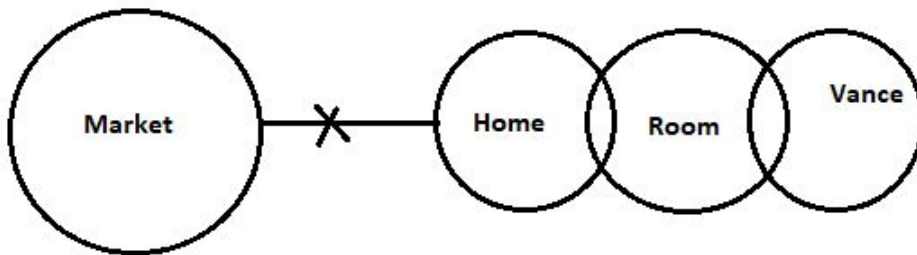
Solutions 32:



Solution 33:



Solution 34:



Solution 35:

